



## Meadow Road

Bushey

£460,000

Davidson Frost-Wellings are delighted to bring this well-presented end terrace house to the market that is situated in the sought after area of Bushey Village. The property comprises of one reception room, three double bedrooms, a fitted kitchen and family style bathroom.

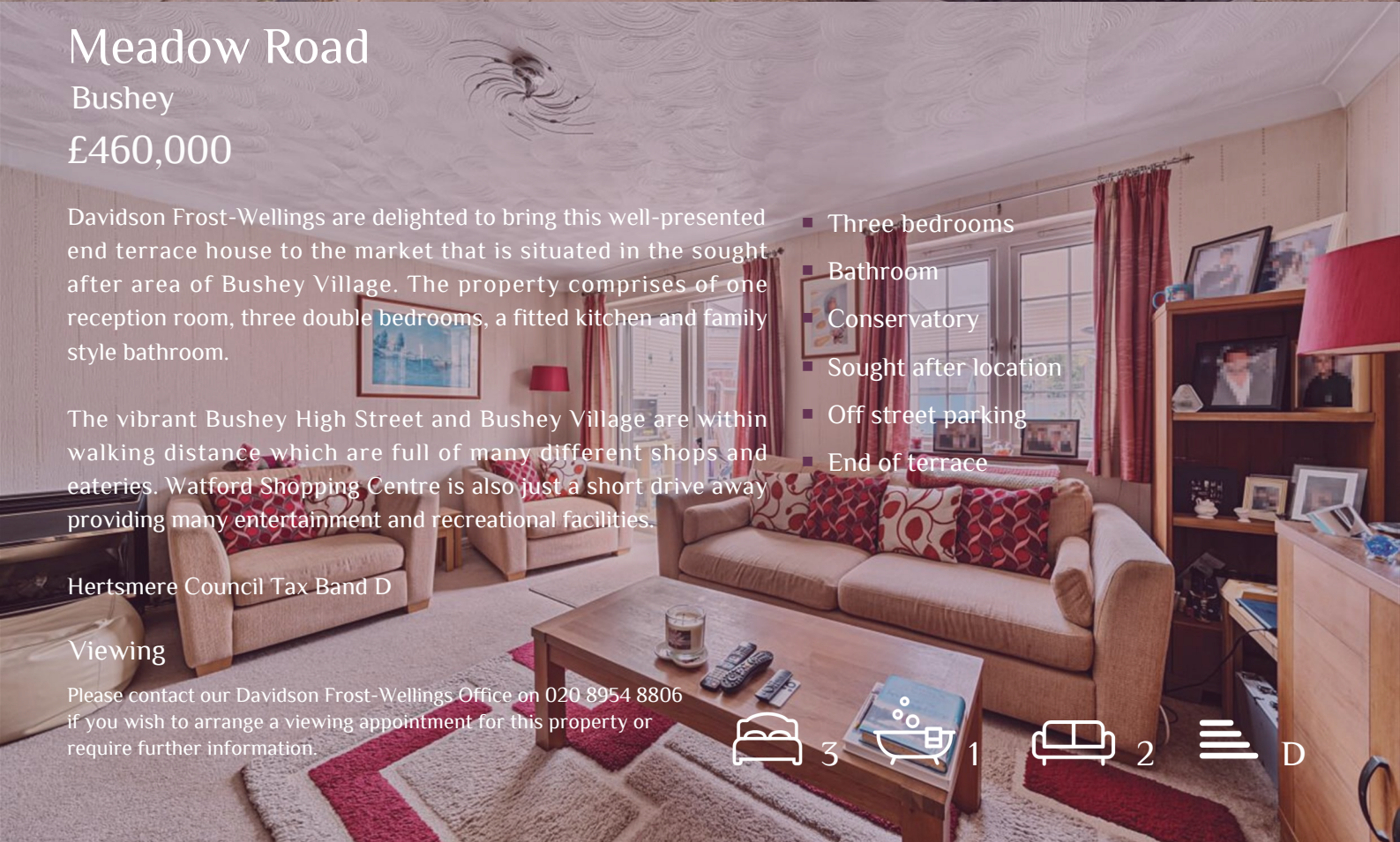
The vibrant Bushey High Street and Bushey Village are within walking distance which are full of many different shops and eateries. Watford Shopping Centre is also just a short drive away providing many entertainment and recreational facilities.

Hertsmere Council Tax Band D

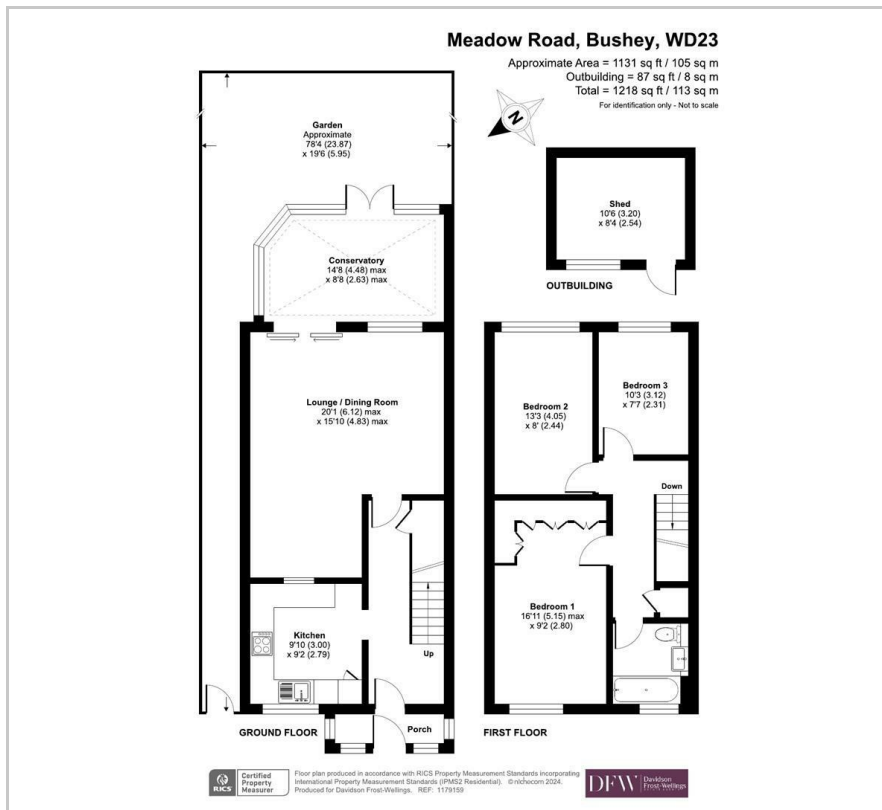
### Viewing

Please contact our Davidson Frost-Wellings Office on 020 8954 8806 if you wish to arrange a viewing appointment for this property or require further information.

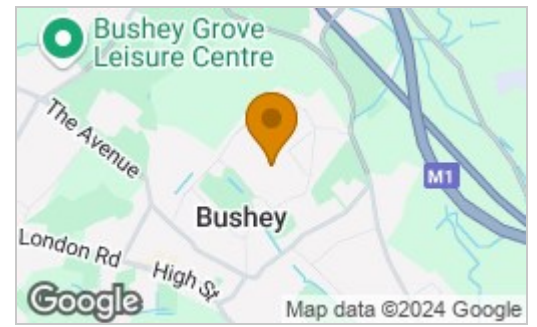
- Three bedrooms
- Bathroom
- Conservatory
- Sought after location
- Off street parking
- End of terrace



## Floor Plan

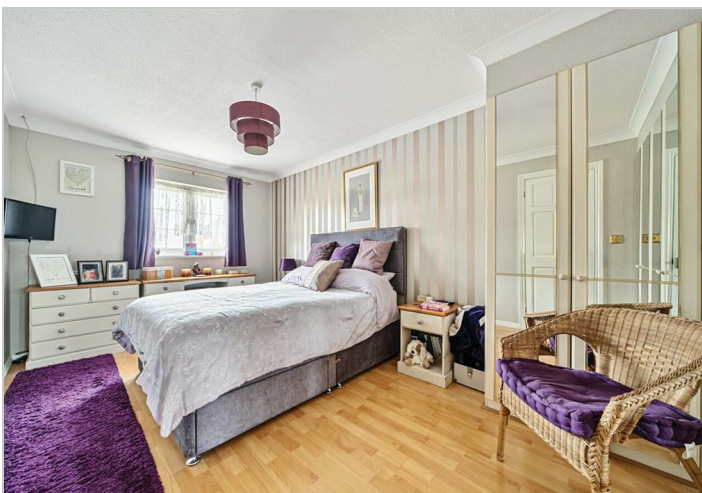


## Area Map



### Energy Efficiency Rating

	Current	Potential
Very energy efficient - lower running costs		
(92 plus) <b>A</b>		<b>85</b>
(81-91) <b>B</b>		
(69-80) <b>C</b>	<b>67</b>	
(55-68) <b>D</b>		
(39-54) <b>E</b>		
(21-38) <b>F</b>		
(1-20) <b>G</b>		
Not energy efficient - higher running costs		
<b>England &amp; Wales</b>	EU Directive 2002/91/EC	



These particulars, whilst believed to be accurate are set out as a general outline only for guidance and do not constitute any part of an offer or contract. Intending purchasers should not rely on them as statements of representation of fact, but must satisfy themselves by inspection or otherwise as to their accuracy. No person in this firm's employment has the authority to make or give any representation or warranty in respect of the property.

47 The Broadway, Stanmore, HA7 4DJ

Tel: 020 8954 8806 Email: info@df-w.co.uk Website: www.df-w.co.uk